

**MIHALY**  
LAND DESIGN  
PLANNING + LANDSCAPE ARCHITECTURE  
330 MILITARY CUTOFF RD., Suite A3  
Wilmington, NC 28405 910.392.4355



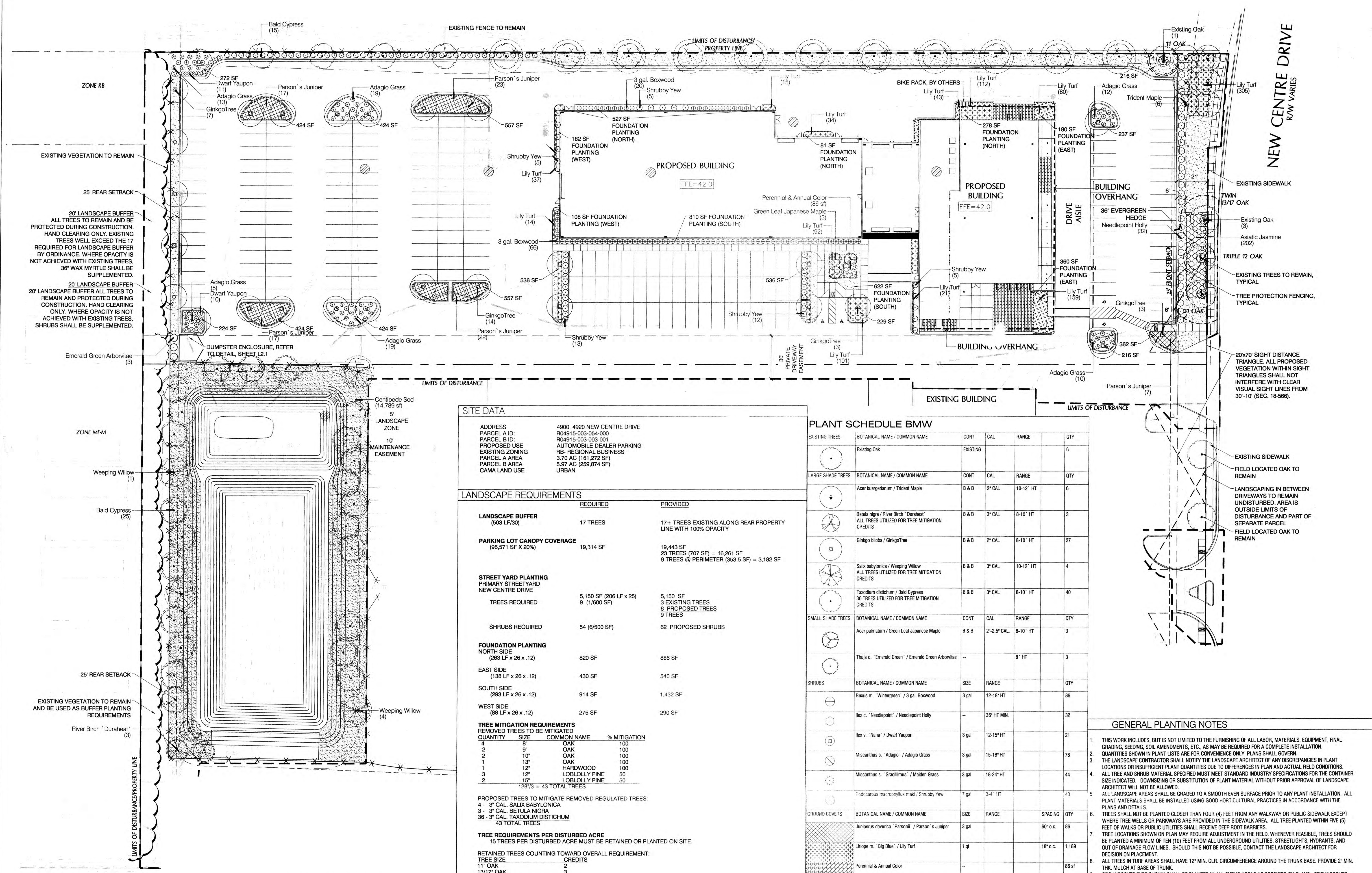
**Revisions**  
2017-06-13: UPDATED LANDSCAPE PLAN PER SITE PLAN CHANGES  
2017-06-14: REVISED TREE REMOVAL/MITIGATION INFORMATION  
2017-07-07: REVISED PLAN TO ADDRESS TRC COMMENTS, ADDED DUMPSTER ENCLOSURE  
2017-07-25: REVISED FOUNDATION PLANTING, ADDED BUFFER NOTE, ADDED EVERGREEN HEDGE AT NEW CENTRE DRIVE PER CITY COMMENTS  
2017-07-31: REVISED DRIVEWAY PER ENG. PLANS  
2018-02-23: REPLACED BALD CYPRESS WITH GINKGO & TRIDENT MAPLE IN AREAS OVERHANGING PARKING SPACES

**CLIENT**  
BAKER MOTOR COMPANY, LLC  
902 MARKET STREET  
WILMINGTON, NC 28401  
(910) 343-9653

**PROJECT**  
NEW CENTRE DRIVE  
LANDSCAPE PLANS

**CONSTRUCTION SET**

Date: 05/15/2017  
Phase:  
Job Number: 680-05  
Designed by: MLD  
Drawn by: ALM  
Checked by: JWM  
Sheet Title: LANDSCAPE PLAN  
Sheet Number: L1.1 of 1 sheets



**SITE DATA**

ADDRESS	4900, 4920 NEW CENTRE DRIVE
PARCEL A ID:	R04915-003-054-000
PARCEL B ID:	R04915-003-003-001
PROPOSED USE	AUTOMOBILE DEALER PARKING
EXISTING ZONING	RB- REGIONAL BUSINESS
PARCEL A AREA	3.70 AC (161,272 SF)
PARCEL B AREA	5.97 AC (259,874 SF)
CAMA LAND USE	URBAN

**LANDSCAPE REQUIREMENTS**

REQUIRED	PROVIDED
<b>LANDSCAPE BUFFER</b> (503 LF/30)	17 TREES
<b>PARKING LOT CANOPY COVERAGE</b> (96,571 SF X 20%)	19,314 SF 19,443 SF 23 TREES (707 SF) = 16,261 SF 9 TREES @ PERIMETER (363.5 SF) = 3,182 SF
<b>STREET YARD PLANTING</b> PRIMARY STREET/ YARD NEW CENTRE DRIVE	5,150 SF (206 LF x 25) 9 (1/600 SF)
<b>TREES REQUIRED</b>	5,150 SF 3 EXISTING TREES 6 PROPOSED TREES 9 TREES
<b>SHRUBS REQUIRED</b>	54 (6/600 SF)
<b>FOUNDATION PLANTING</b>	62 PROPOSED SHRUBS
<b>NORTH SIDE</b> (263 LF x 26 x .12)	820 SF
<b>EAST SIDE</b> (138 LF x 26 x .12)	430 SF
<b>SOUTH SIDE</b> (293 LF x 26 x .12)	914 SF
<b>WEST SIDE</b> (88 LF x 26 x .12)	275 SF

**TREE MITIGATION REQUIREMENTS**

QUANTITY	SIZE	COMMON NAME	% MITIGATION
4	8"	OAK	100
2	9"	OAK	100
2	10"	OAK	100
1	13"	OAK	100
1	12"	HARDWOOD	100
3	12"	LOBLOLLY PINE	50
2	15"	LOBLOLLY PINE	50
1287/3 = 43 TOTAL TREES			

PROPOSED TREES TO MITIGATE REMOVED REGULATED TREES:  
4 - 3" CAL. SALIX BABYLONICA  
3 - 3" CAL. BETULA NIGRA  
36 - 3" CAL. TAXODIUM DISTICHUM  
43 TOTAL TREES

**TREE REQUIREMENTS PER DISTURBED ACRE**  
15 TREES PER DISTURBED ACRE MUST BE RETAINED OR PLANTED ON SITE.

**RETAINED TREES COUNTING TOWARD OVERALL REQUIREMENT:**

TREE SIZE	CREDITS
11" OAK	2
13/17" OAK	3
12" OAK	3
21" OAK	4
<b>TOTAL</b>	<b>12 TREE CREDITS</b>

**REQUIRED:** 4.92 ACRES DISTURBED x 15 TREES = 74 TREES REQUIRED  
**PROVIDED:** 12 EXISTING TREE CREDITS  
83 TREES PLANTED - REFER TO PLANTING LEGEND, THIS SHEET  
**TOTAL:** 95 TREES PROVIDED

**PLANT SCHEDULE BMW**

EXISTING TREES	BOTANICAL NAME / COMMON NAME	CONT	CAL	RANGE	QTY
Existing Oak		EXISTING			6
<b>LARGE SHADE TREES</b>	<b>BOTANICAL NAME / COMMON NAME</b>	<b>CONT</b>	<b>CAL</b>	<b>RANGE</b>	<b>QTY</b>
Acer buergerianum / Trident Maple		8 & B	2" CAL	10-12' HT	6
Betula nigra / River Birch "Duraheat"		8 & B	3" CAL	8-10' HT	3
Ginkgo biloba / Ginkgo Tree		8 & B	2" CAL	8-10' HT	27
Salix babylonica / Weeping Willow		8 & B	3" CAL	10-12' HT	4
Taxodium distichum / Bald Cypress		8 & B	3" CAL	8-10' HT	40
<b>SMALL SHADE TREES</b>	<b>BOTANICAL NAME / COMMON NAME</b>	<b>CONT</b>	<b>CAL</b>	<b>RANGE</b>	<b>QTY</b>
Acer palmatum / Green Leaf Japanese Maple		8 & B	2"-2.5" CAL	8-10' HT	3
Thuja o. "Emerald Green" / Emerald Green Arborvitae		--		8' HT	3
<b>SHRUBS</b>	<b>BOTANICAL NAME / COMMON NAME</b>	<b>SIZE</b>	<b>RANGE</b>	<b>QTY</b>	
Buxus m. "Wintergreen" / 3 gal. Boxwood		3 gal	12-18" HT	86	
Ilex c. "Needpoint" / Needpoint Holly		--	36" HT MIN.	32	
Ilex v. "Nana" / Dwarf Yaupon		3 gal	12-15" HT	21	
Miscanthus s. "Adagio" / Adagio Grass		3 gal	15-18" HT	78	
Miscanthus s. "Gracillimus" / Maiden Grass		3 gal	18-24" HT	44	
Podocarpus macrophyllus maki / Shrubby Yew		7 gal	3-4' HT	40	
<b>GROUND COVERS</b>	<b>BOTANICAL NAME / COMMON NAME</b>	<b>SIZE</b>	<b>RANGE</b>	<b>SPACING</b>	<b>QTY</b>
Juniperus davurica "Parsonii" / Parson's Juniper		3 gal		60" o.c.	86
Liriope m. "Big Blue" / Lily Turf		1 qt		18" o.c.	1,189
Perennial & Annual Color		--		86 sf	
Trachelospermum a. "Asiatic" / Asiatic Jasmine		1 qt		24" o.c.	202
<b>SOD/SEED</b>	<b>BOTANICAL NAME / COMMON NAME</b>	<b>SIZE</b>	<b>RANGE</b>	<b>SPACING</b>	<b>QTY</b>
Eremochloa ophiuroides / Centipede Sod		SOD			14,789 sf
Zoysia japonica "Crown" / Korean Grass		SOD			7,352 sf

**GENERAL PLANTING NOTES**

- THIS WORK INCLUDES, BUT IS NOT LIMITED TO THE FURNISHING OF ALL LABOR, MATERIALS, EQUIPMENT, FINAL GRADING, SEEDING, SOIL AMENDMENTS, ETC., AS MAY BE REQUIRED FOR A COMPLETE INSTALLATION.
- QUANTITIES SHOWN IN PLANT LISTS ARE FOR CONVENIENCE ONLY. PLANS SHALL GOVERN.
- THE LANDSCAPE CONTRACTOR SHALL NOTIFY THE LANDSCAPE ARCHITECT OF ANY DISCREPANCIES IN PLANT LOCATIONS OR INSUFFICIENT PLANT QUANTITIES DUE TO DIFFERENCES IN PLAN AND ACTUAL FIELD CONDITIONS.
- ALL TREE AND SHRUB MATERIAL SPECIFIED MUST MEET STANDARD INDUSTRY SPECIFICATIONS FOR THE CONTAINER SIZE INDICATED. DOWNSIZING OR SUBSTITUTION OF PLANT MATERIAL WITHOUT PRIOR APPROVAL OF LANDSCAPE ARCHITECT WILL NOT BE ALLOWED.
- ALL LANDSCAPE AREAS SHALL BE GRADED TO A SMOOTH EVEN SURFACE PRIOR TO ANY PLANT INSTALLATION. ALL PLANT MATERIALS SHALL BE INSTALLED USING GOOD HORTICULTURAL PRACTICES IN ACCORDANCE WITH THE PLANS AND DETAILS.
- TREES SHALL NOT BE PLANTED CLOSER THAN FOUR (4) FEET FROM ANY WALKWAY OR PUBLIC SIDEWALK EXCEPT WHERE TREE WELLS OR PARKWAYS ARE PROVIDED IN THE SIDEWALK AREA. ALL TREE PLANTED WITH FIVE (5) FEET OF WALKS OR PUBLIC UTILITIES SHALL RECEIVE DEEP ROOT BARRIERS.
- TREE LOCATIONS SHOWN ON PLAN MAY REQUIRE ADJUSTMENT IN THE FIELD. WHENEVER FEASIBLE, TREES SHOULD BE PLANTED AT A MINIMUM OF TEN (10) FEET FROM ALL UNDERGROUND UTILITIES, STREETLIGHTS, HYDRANTS, AND OUT OF DRAINAGE FLOW LINES. SHOULD THIS NOT BE POSSIBLE, CONTACT THE LANDSCAPE ARCHITECT FOR DECISION ON PLACEMENT.
- ALL TREES IN TURF AREAS SHALL HAVE 12" MIN. C.I.R. CIRCUMFERENCE AROUND THE TRUNK BASE. PROVIDE 2" MIN. THK. MULCH AT BASE OF TRUNK.
- GROUND COVER TYPE SHOWN SHALL BE PLANTED IN ALL SHRUB AREAS AS SPECIFIED ON PLANS. GROUND COVER SHALL BE PLANTED AT 8" ON-CENTER UNIFORM TRIANGULAR SPACING, AND SHALL BE CONTINUOUS UNDER ALL TREE AND SHRUB MASSES AS SHOWN ON PLAN.
- MATURE PLANTINGS SHALL NOT INTERFERE WITH UTILITIES AND TRAFFIC SIGHT LINES.
- ALL PLANTING AREAS SHALL BE MULCHED WITH PINE STRAW, EXCEPT FOR AREAS PLANTED WITH GROUND COVER. ALL AREAS PLANTED WITH GROUND COVER SHALL BE MULCHED WITH HARDWOOD MULCH.

**Approved Construction Plan**

Name: \_\_\_\_\_ Date: \_\_\_\_\_  
 Planning: \_\_\_\_\_  
 Public Utilities: N/A  
 Traffic: N/A  
 Fire: N/A

